



Spectra-Tech

Consultancy Services



FILTERS & STRAINERS

Our Presence

Spectra-Tech

A-107, 1st Floor, Regal Plaza, Lokpuram, off Pokhran Road 2, Opp- Hiranandani Meadows,
Thane (W)-400610, Mumbai, India.

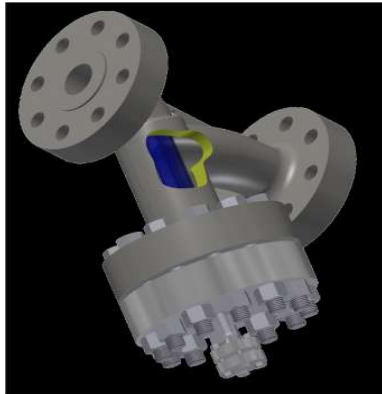
Ph. No: +91 22 4131 9962 | +91 93 2625 8987 | Mob: +91 9637112962

Email: sales@spectra-tech.in

www.spectratechconsultancy.com

Fluid filtration and separation equipment leveraging key technologies including mechanical separation, inertial impaction separation and adsorption separation. Products are manufactured in plants holding ISO 9001, OHSAS 18001, ASME U, National Board & Alberta Boiler Safety certifications.

Y-Type Strainers



CAST STEEL

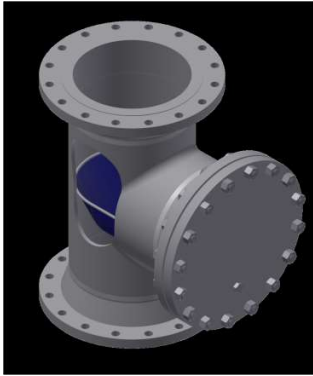
SIZE	Up to 18"
Filter Rating	150 µm - 8000 µm
Pressure Rating	Up to ASME #2500, up to API 10K
End Connection:-	Flanged, Butt Welding, screw Threaded, Socket Weld
Housing MOC:	
<ul style="list-style-type: none"> • ASTM A105 , • ASTM A216 Gr. WCB • ASTM A352 Gr. LCC , • ASTM A351 Gr. CF8, • ASTM A351 Gr. CF8M, • ASTM A351 Gr. CF3, • ASTM A351 Gr. CF3M 	
Filter Element MOC:	
<ul style="list-style-type: none"> • Austenitic stainless steels • Austenitic-ferritic stainless steels • Nickel alloys • Copper alloys 	



FABRICATED

SIZE	Up to 30"
Filter Rating	150 µm - 8000 µm
Pressure Rating	Up to ASME #2500, Up to API 6A 15K
End Connection	Flanged, Butt Welding
Housing MOC:	
<ul style="list-style-type: none"> • ASTM A106 Gr. B • ASTM A105 • ASTM A312 TP304 • ASTM A182 Gr. F304 • ASTM A312 TP316 • ASTM A182 Gr. F316 • ASTM A240 Type 304/316 	
Filter Element MOC:	
<ul style="list-style-type: none"> • Austenitic stainless steels • Austenitic-ferritic stainless steels • Nickel alloys • Copper alloys 	

T-Type Strainers



FABRICATED

SIZE	Up to 60"
Filter Rating	2000 µm - 8000 µm
Pressure Rating	Up to ASME #2500, Up to API 10K
End Connection:-	Flanged, Butt Welding
Housing MOC: <ul style="list-style-type: none"> • ASTM A234 Gr. WPB • ASTM A105 • ASTM A403 Gr. WP304 • ASTM A182 Gr. F304 • ASTM A403 Gr. WP316 • ASTM A182 Gr. F316 • ASTM A516 Gr. 70 • ASTM A240 Type 304/316 	
Filter Element MOC: <ul style="list-style-type: none"> • Austenitic stainless steels • Austenitic-ferritic stainless steels • Nickel alloys • Copper alloys 	



CAST FLANGED STRAINER

SIZE	2" to 8"
Filter Rating	
Pressure Rating	#150, #300
End Connection	Flat face Flanged, Raised face Flanged, Butt Weld, RTJ Flanged
Housing MOC: <ul style="list-style-type: none"> • ASTM A216 Gr. WCB • ASTM A216 Gr. WCC • ASTM A352 Gr. LCB • ASTM A352 Gr. LCC • ASTM A351 Gr. CF8 • ASTM A351 Gr. CF8M • ASTM A351 Gr. CF3 • ASTM A351 Gr. CF3M 	
Screen & Mesh MOC: <ul style="list-style-type: none"> • AISI 304 • AISI 316 • AISI 304L • AISI 316L 	

SIMPLEX BASKET FILTER



CAST STEEL

SIZE	Up to 12"
Filter Rating	150 µm - 8000 µm
Pressure Rating	Up to ASME #300
End Connection:-	Flanged, Butt Welding
Housing MOC:	
<ul style="list-style-type: none"> • ASTM A105 • ASTM A216 Gr. WCB • ASTM A352 Gr. LCC • ASTM A351 Gr. CF8 • ASTM A351 Gr. CF8M • ASTM A351 Gr. CF3 • ASTM A351 Gr. CF3M6 	
Filter Element MOC:	
<ul style="list-style-type: none"> • Austenitic stainless steels • Austenitic-ferritic stainless steels • Nickel alloys • Copper alloys 	



FABRICATED

SIZE	Up to 120"
Filter Rating	75 µm - 8000 µm
Pressure Rating	Up to ASME #2500, Up to API 6A 15K
End Connection	
Housing MOC:	
<ul style="list-style-type: none"> • ASTM A106 Gr. B • ASTM A105 • ASTM A312 TP304 • ASTM A182 Gr. F304 • ASTM A312 TP316 • ASTM A182 Gr. F316 • ASTM A240 Type 304/316 	
Filter Element MOC:	
<ul style="list-style-type: none"> • Austenitic stainless steels • Austenitic-ferritic stainless steels • Nickel alloys • Copper alloys 	

DUPLEX BASKET FILTER



CAST STEEL

SIZE	Up to 6"
Filter Rating	10 µm - 8000 µm
Pressure Rating	Up to ASME #300
End Connection:-	Flanged, Screw, Socket Weld
Housing MOC:	
<ul style="list-style-type: none"> • ASTM A216 Gr. WCB • ASTM A351 Gr. CF8 • ASTM A351 Gr. CF8M • ASTM A351 Gr. CF3 • ASTM A351 Gr. CF3M 	
Filter Element MOC:	
<ul style="list-style-type: none"> • Austenitic stainless steels • Austenitic-ferritic stainless steels • Nickel alloys • Copper alloys 	



FABRICATED

SIZE	Up to 24"
Filter Rating	5 µm - 8000 µm
Pressure Rating	Up to ASME #2500
End Connection	Flanged, Butt Weld
Housing MOC:	
<ul style="list-style-type: none"> • ASTM A106 Gr. B • ASTM A105 • ASTM A312 TP304 • ASTM A182 Gr. F304 • ASTM A312 TP316 • ASTM A182 Gr. F316 • ASTM A240 Type 304/316 	
Filter Element MOC:	
<ul style="list-style-type: none"> • Austenitic stainless steels • Austenitic-ferritic stainless steels • Nickel alloys • Copper alloys 	

BASKET FLANGED STRAINER



CAST BASKET FLANGED STRAINER

SIZE	Up to 12"
Filter Rating	150 µm to 8000 µm
Pressure Rating	Up to ASME #300
End Connection:-	Flanged, Butt Weld
Housing MOC:-	
<ul style="list-style-type: none"> • ASTM A105 • ASTM A216 Gr. WCB • ASTM A352 Gr. LCC • ASTM A351 Gr. CF8 • ASTM A351 Gr. CF8M • ASTM A351 Gr. CF3 • ASTM A351 Gr. CF3M 	
Filter Element MOC:	
<ul style="list-style-type: none"> • Austenitic stainless steels • Austenitic-ferritic stainless steels • Nickel alloys • Copper alloys 	



FABRICATED BASKET FLANGED STRAINER

SIZE	Up to 120"
Filter Rating	75 µm to 8000 µm
Pressure Rating	Up to ASME #2500, Up to API 6A 15K
End Connection	Flanged, Butt Weld
Housing MOC:-	
<ul style="list-style-type: none"> • ASTM A106 Gr. B • ASTM A105 • ASTM A312 TP304 • ASTM A182 Gr. F304 • ASTM A312 TP316 • ASTM A182 Gr. F316 • ASTM A240 Type 304/316 	
Filter Element MOC:	
<ul style="list-style-type: none"> • Austenitic stainless steels • Austenitic-ferritic stainless steels • Nickel alloys • Copper alloys 	

OTHER PRODUCTS



FUEL GAS CONDITIONING SYSTEM



COALESCER FILTER SEPERATORS



MULTI-CARRIAGE GAS FILTER

Spectra-Tech
Consultancy Services